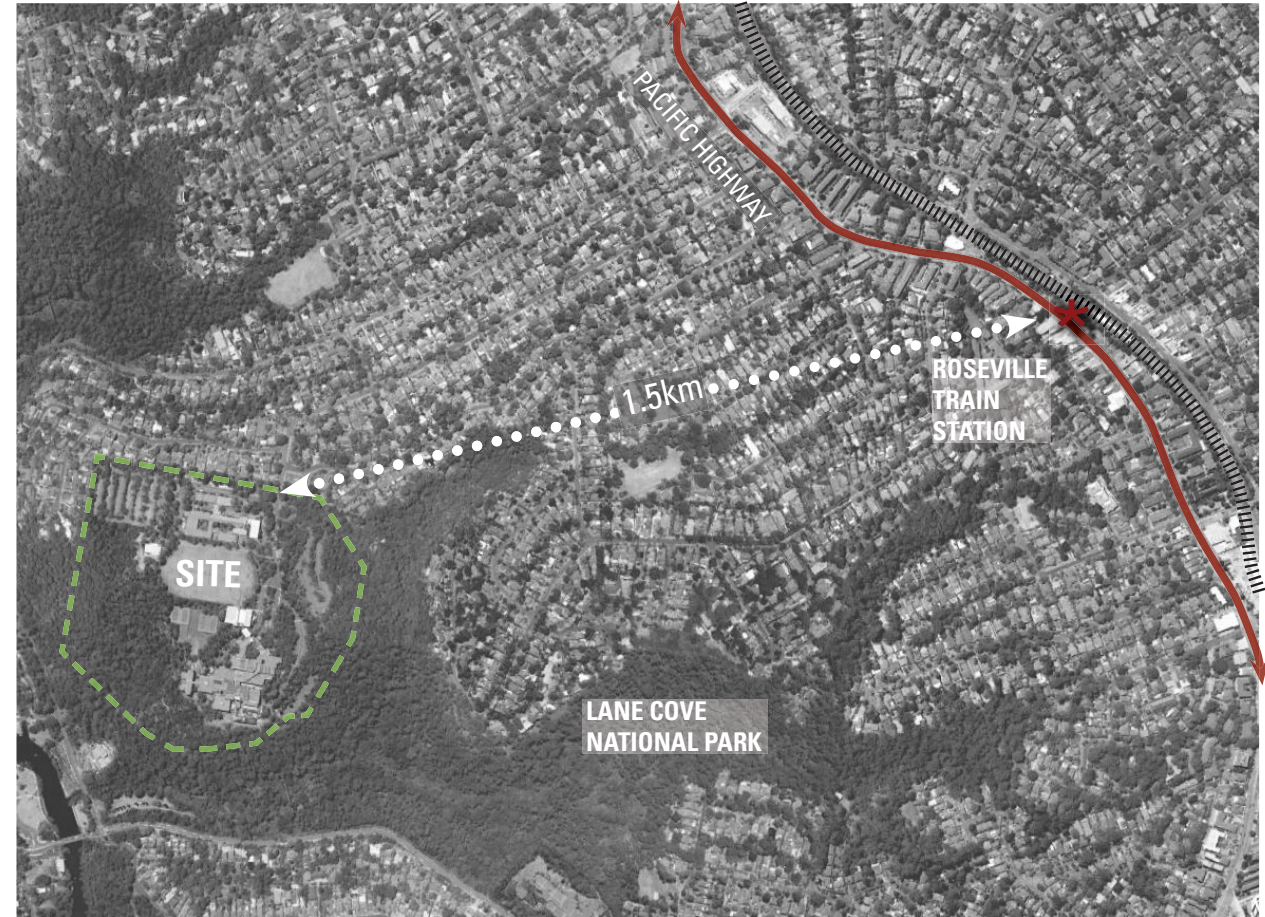


LOCAL CONTEXT

## CONTEXT

Edgelea is the development of the surplus land at UTS Ku-ring-gai Campus sold by public tender and acquired by Defence Housing Australia (DHA) to assist in meeting provisioning requirements to house Defence personnel in Sydney.

The campus is located 20 minutes drive from Sydney's CBD on the North Shore approximately 1.5 km from the Roseville Train Station on the southern edge of Lindfield. The site sits adjacent to steep sandstone gullies on the edge of the Lane Cove National Park, offering a beautiful outlook into the bushland setting as well as easy access to the amenities located within the park.



LOCAL CONTEXT



SITE CONTEXT

CONTEXT